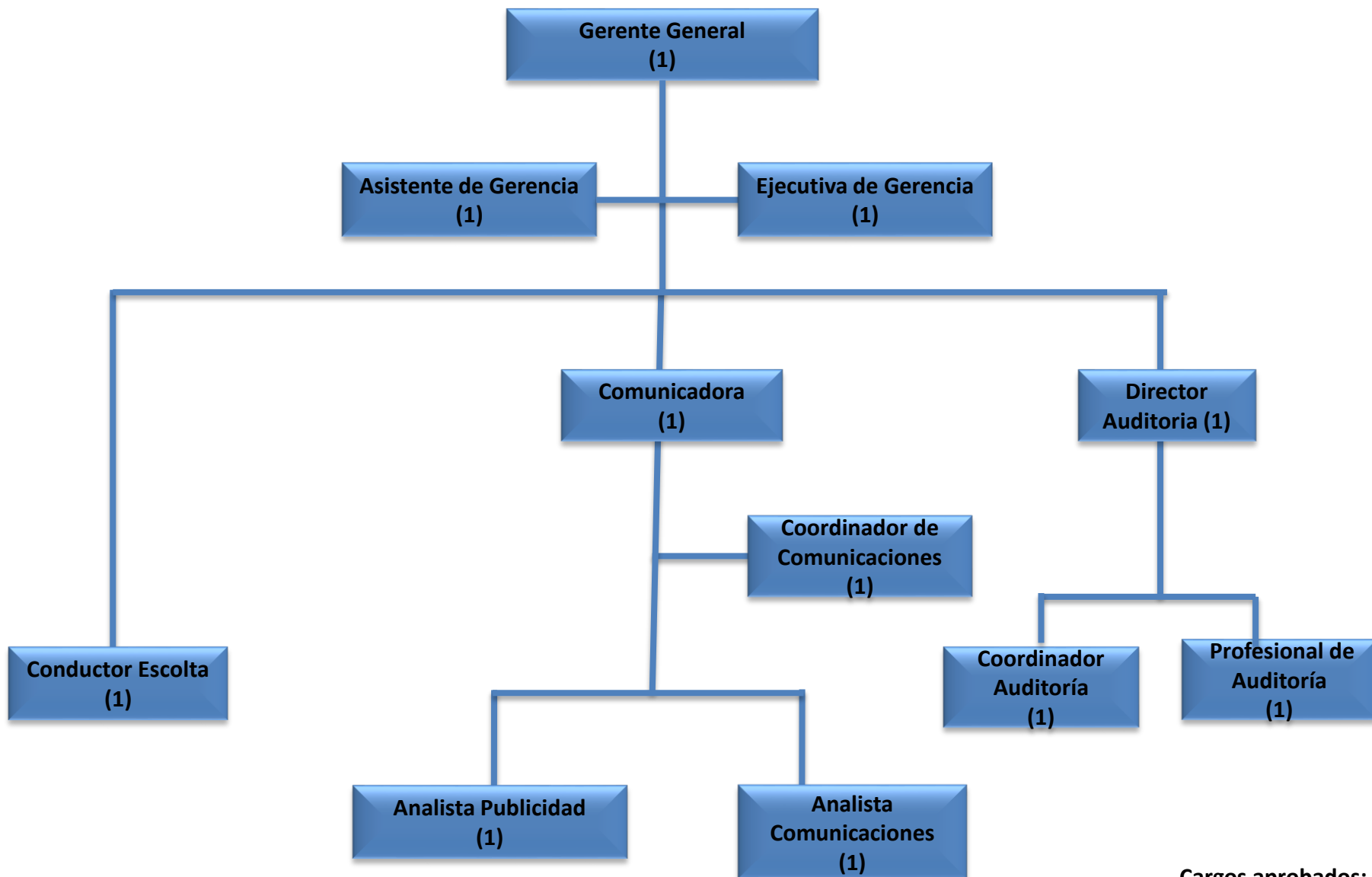


# **PLAZA MAYOR MEDELLÍN S.A.**

## **ORGANIGRAMA FUNCIONAL**

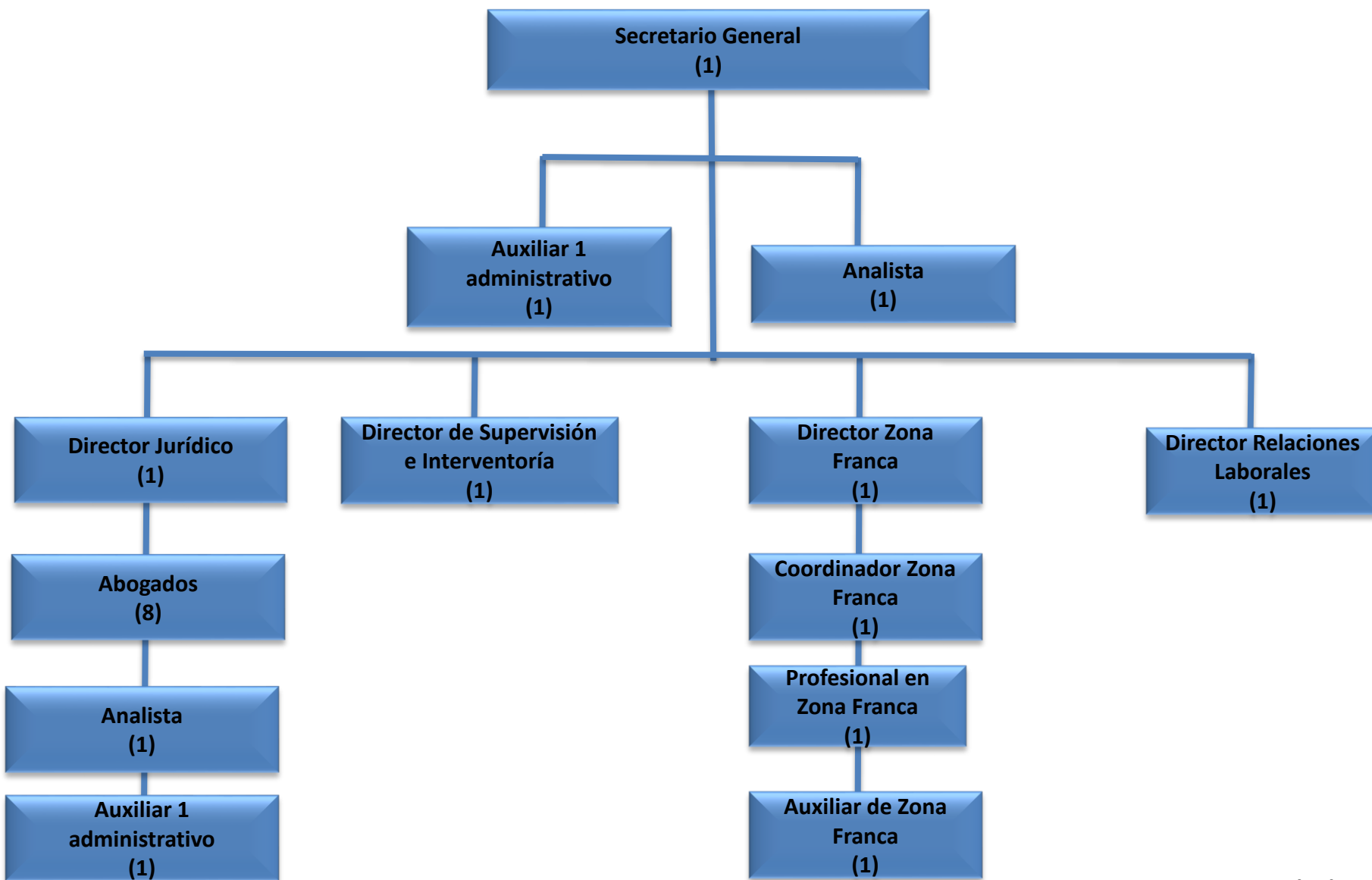
### **2016**

# GERENCIA GENERAL

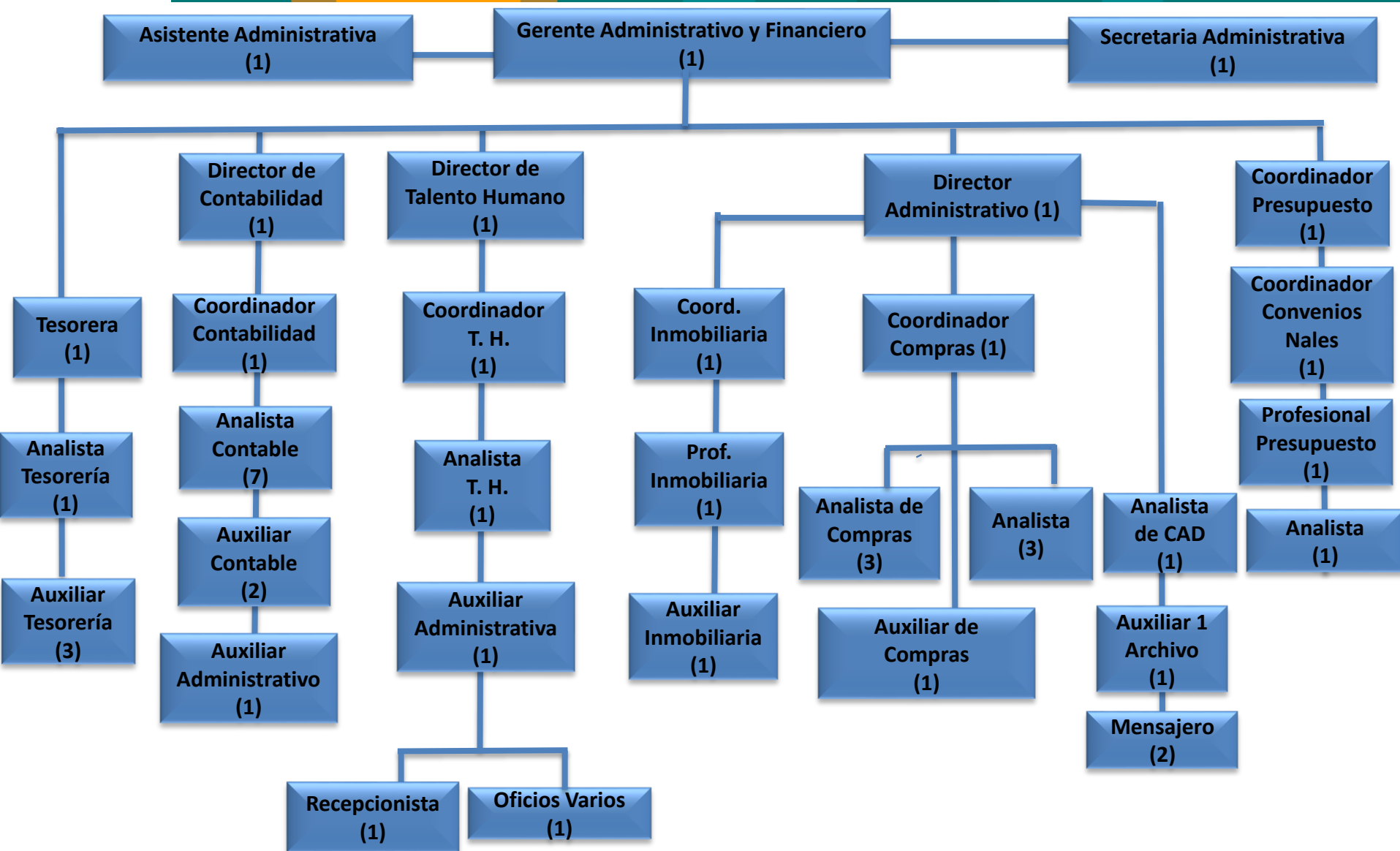


Cargos aprobados: 11

# SECRETARÍA GENERAL

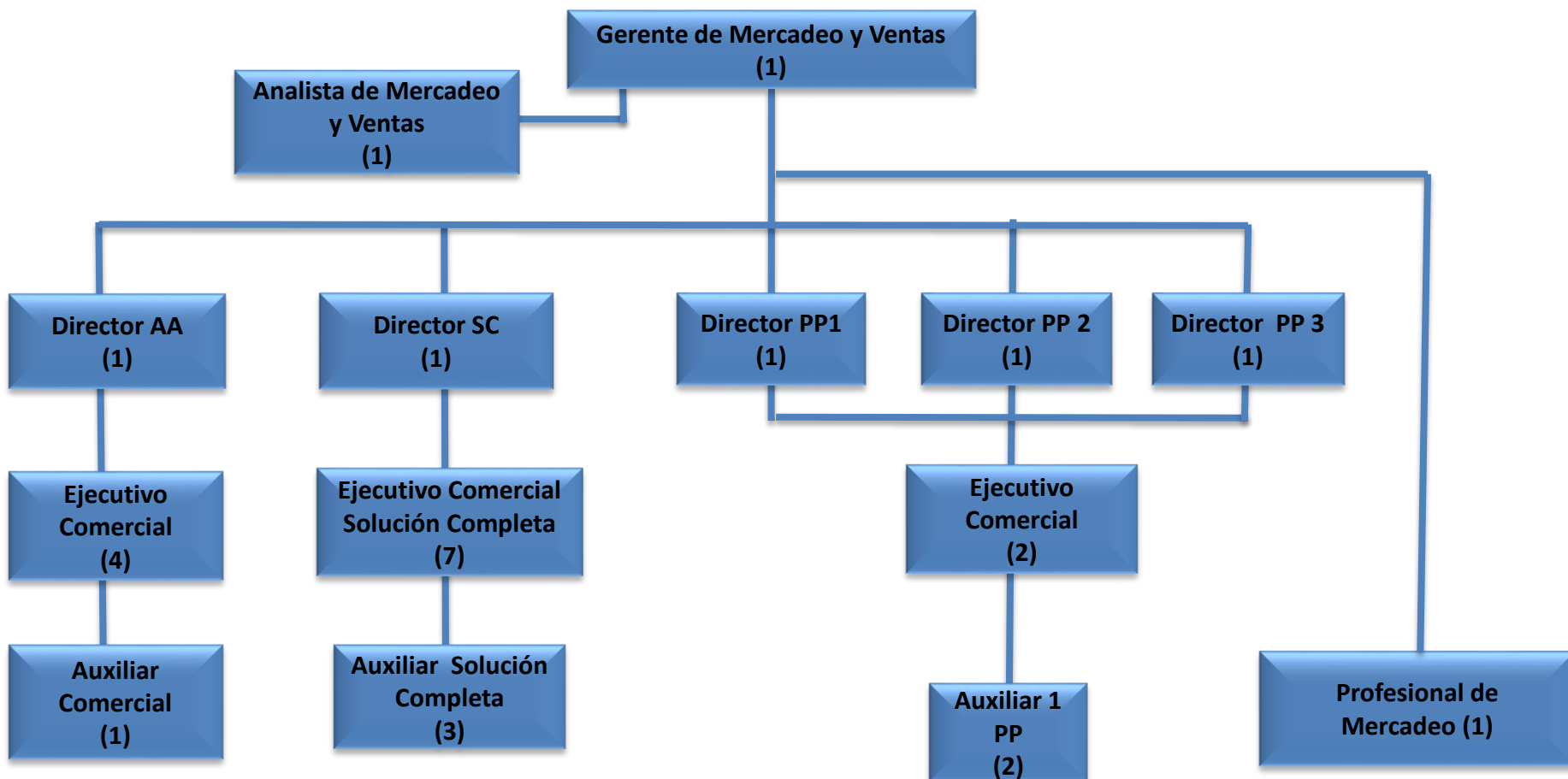


Cargos aprobados: 20



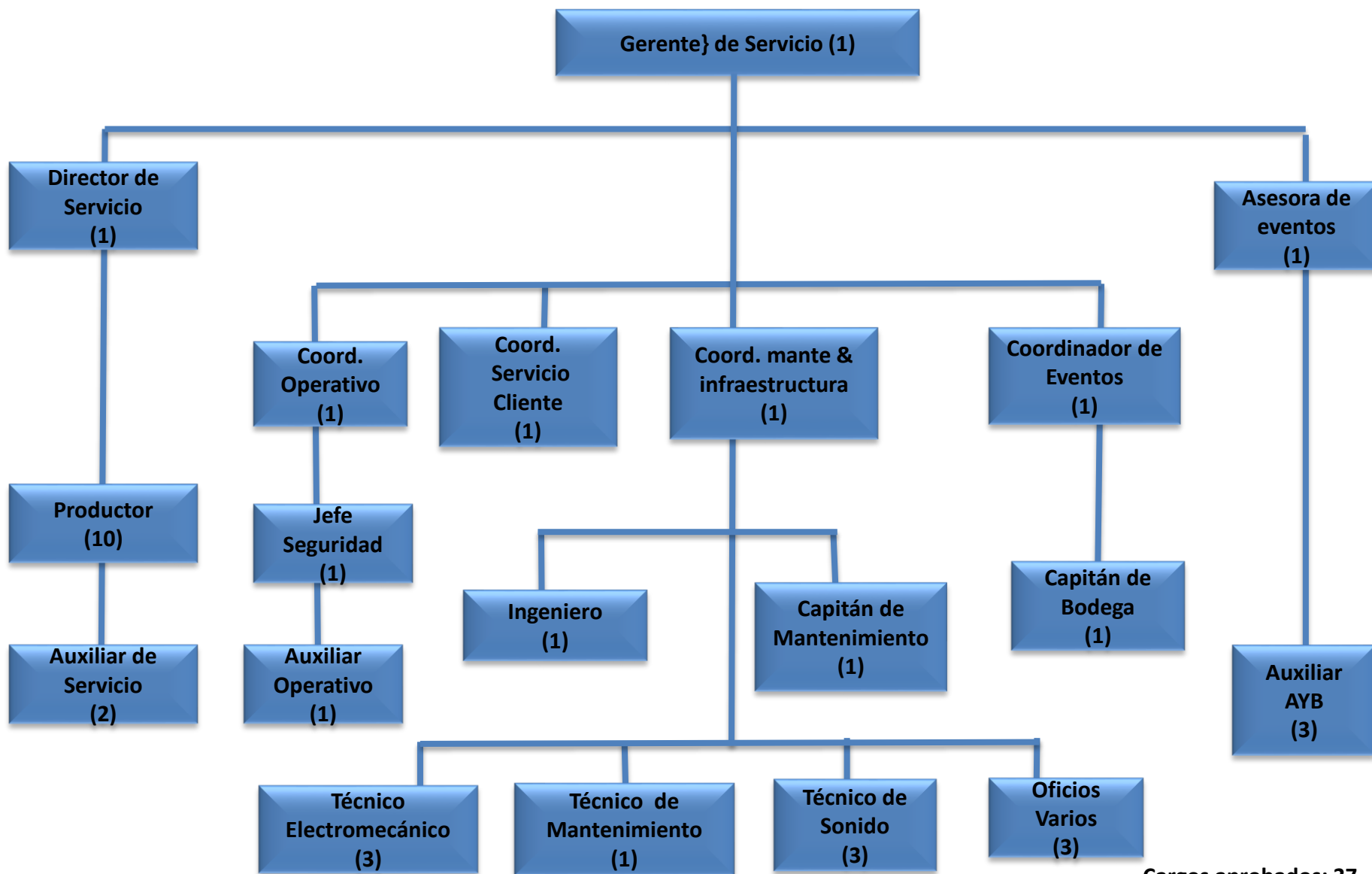
Cargos aprobados: 45

# GERENCIA DE MERCADEO Y VENTAS



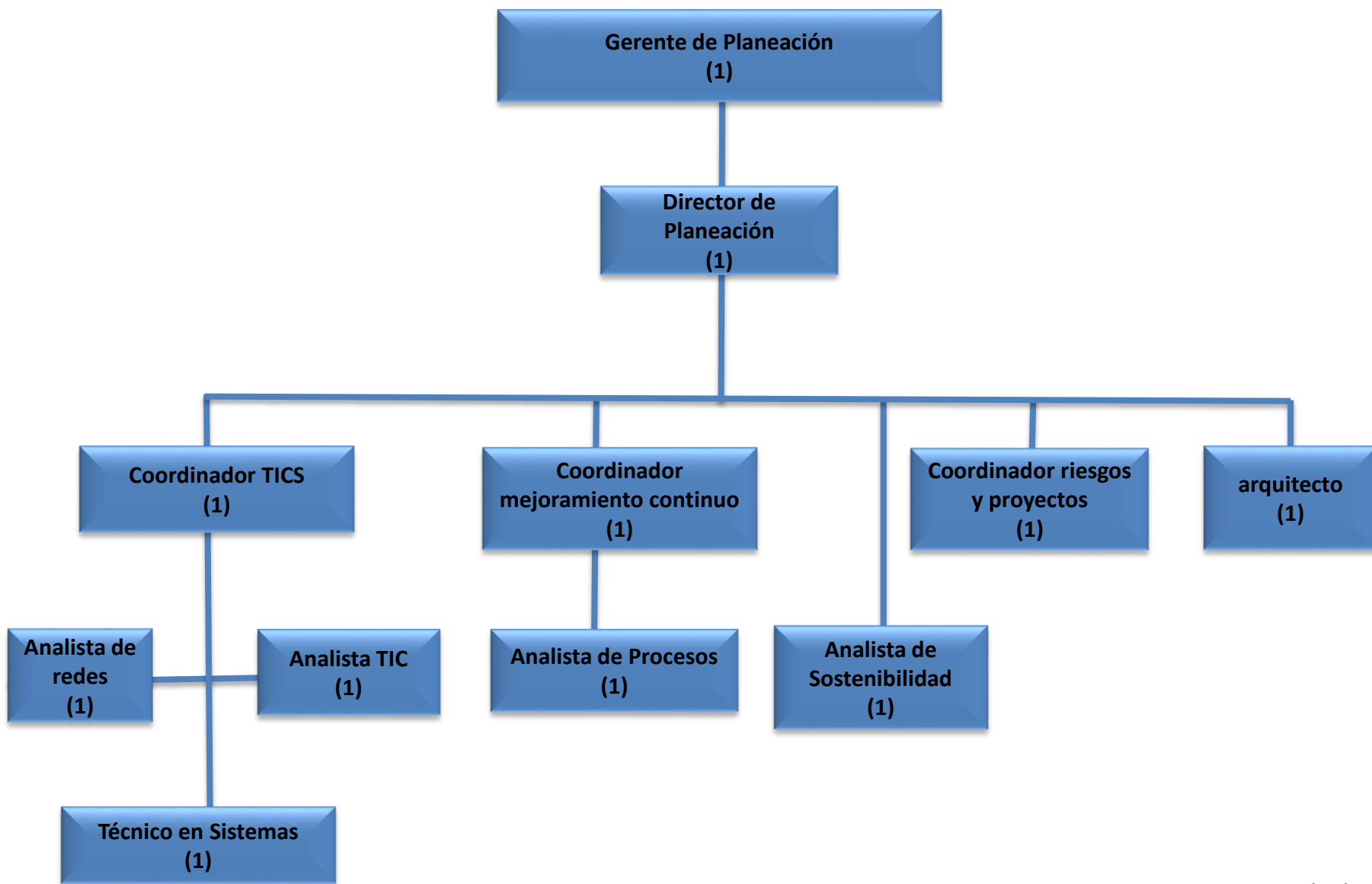
Cargos aprobados: 27

# GERENCIA DE SERVICIO



Cargos aprobados: 37

# GERENCIA PLANEACIÓN



Cargos aprobados: 11

